

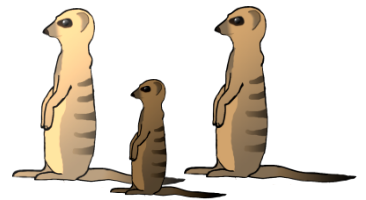


Colchester Zoo

Learning at the Zoo

Activity Pack 2

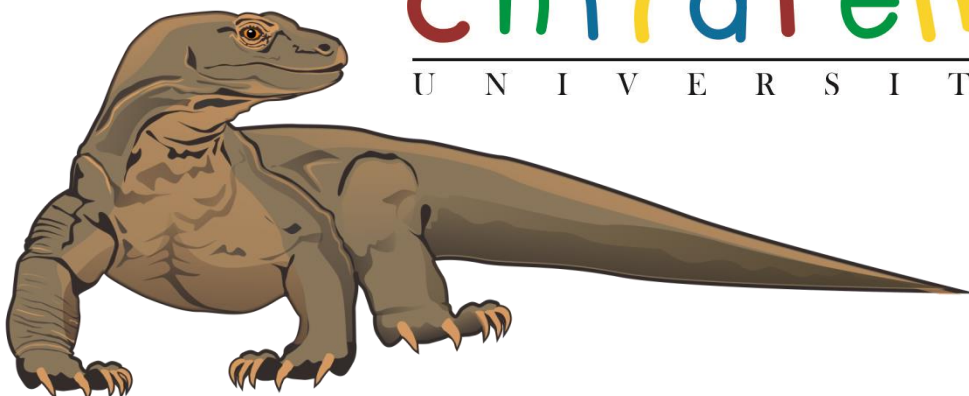
This pack is designed to provide parents, families and groups with information and activities to help you learn at Colchester Zoo. Complete the activities to earn Children's University passport stamps! There are four different packs, you can mix and match and complete worksheets from all the packs. Please note, you can earn a **maximum of 6 hours per day** by completing worksheet pages



If you are working to earn Children's University passport stamps, please complete as many pages of the worksheets as you wish and bring them to Guest Services at the end of your day. The more pages you complete, the more stamps you earn up to a **maximum of six hours per day**.

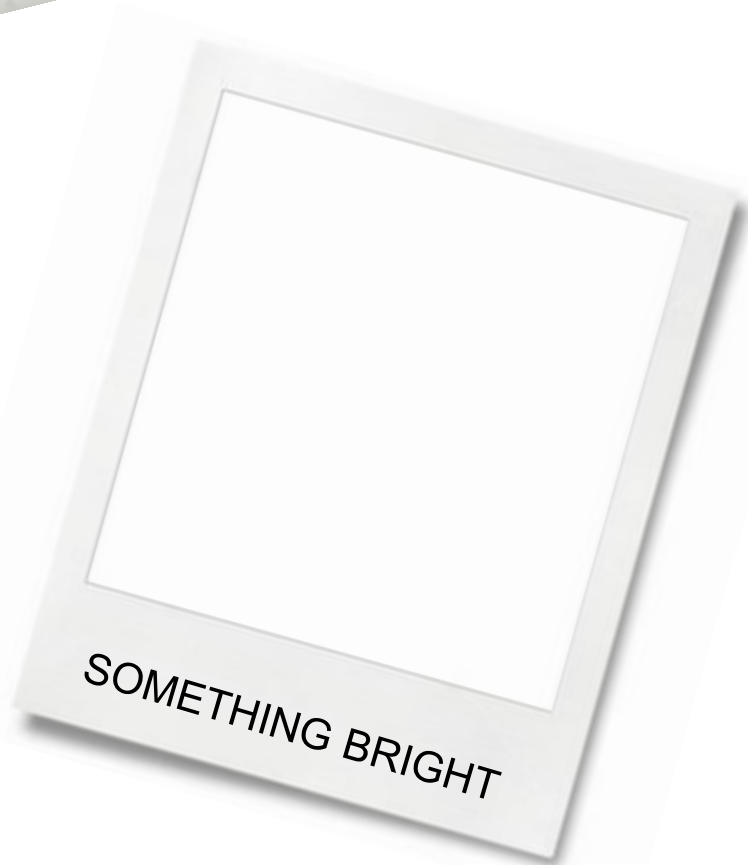
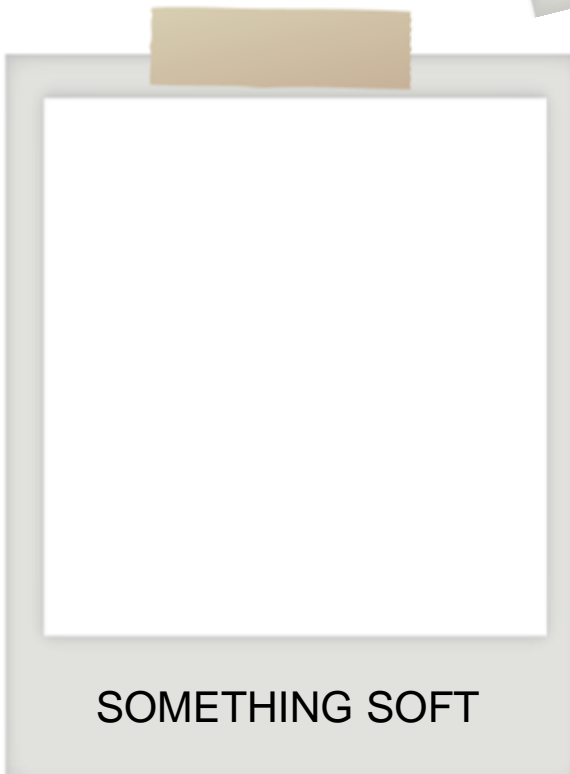
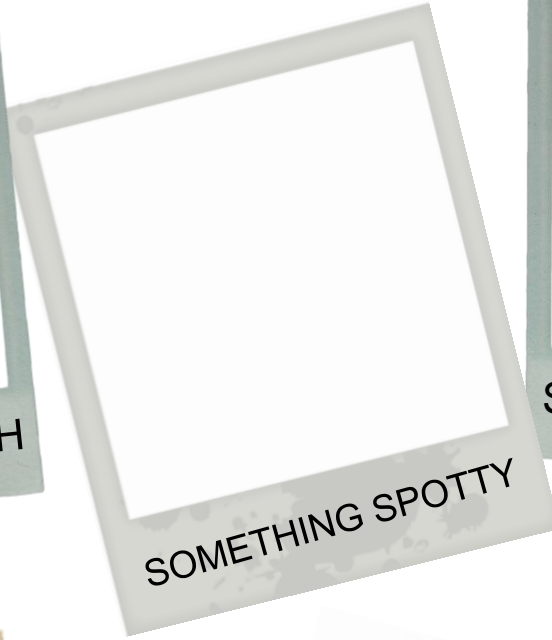
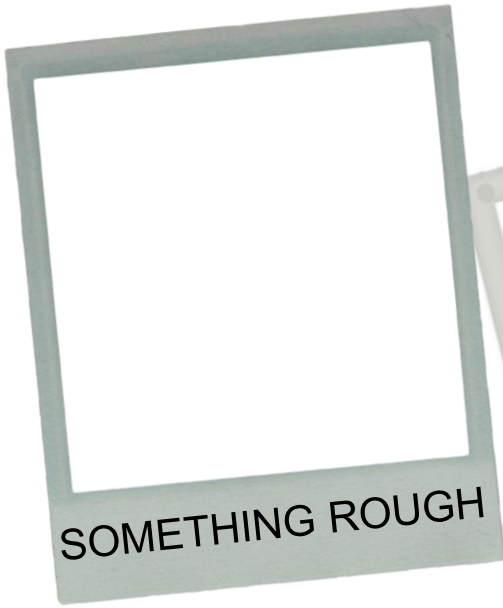
Please download and print the pack yourself.
For a small donation we can print this pack on your behalf.

ESSEX





Draw pictures of animals that match each description



4 VERY TINY THINGS

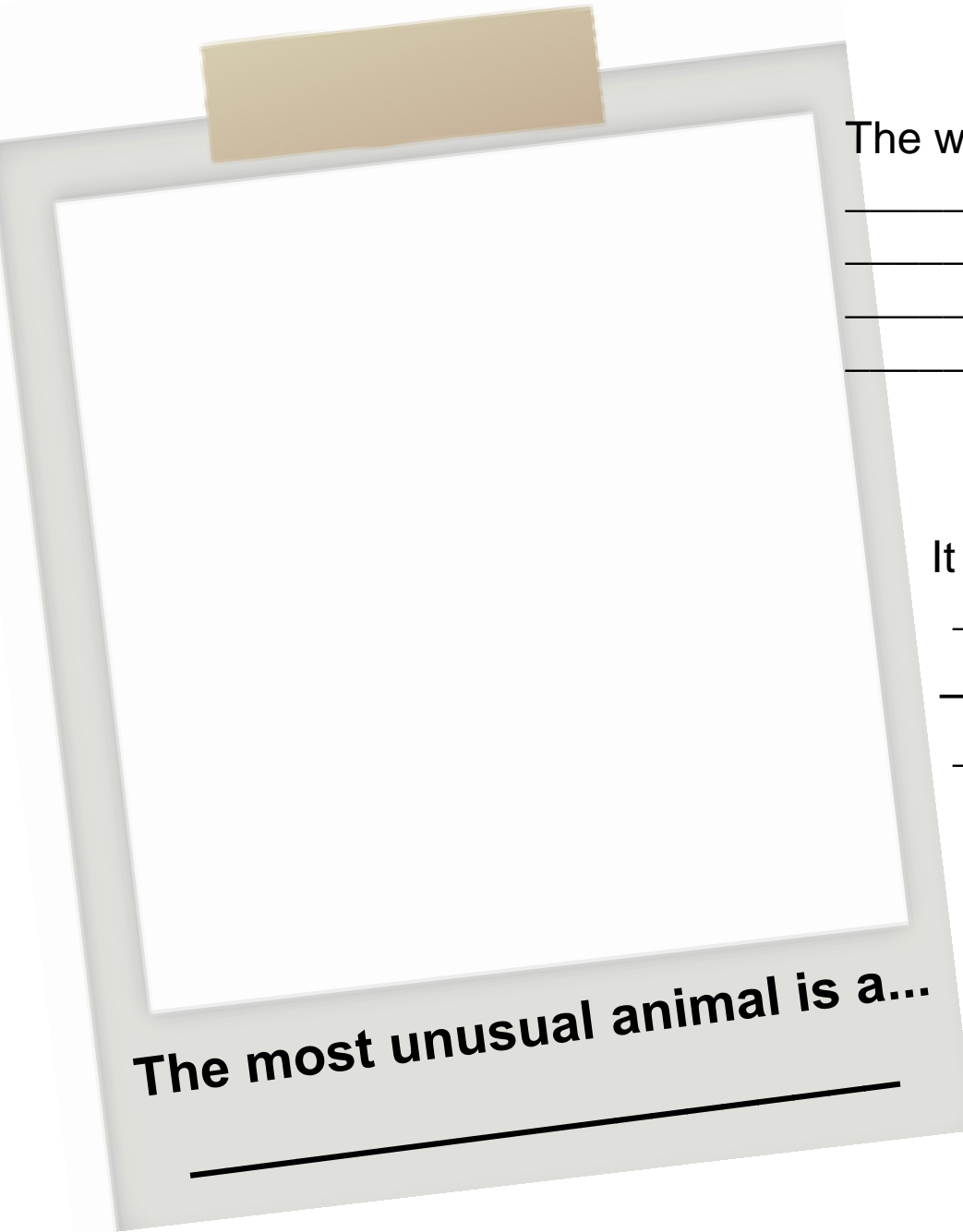
--	--	--	--



Sketch the most unusual animal you find at the zoo!

What colour is it: _____

It is covered in (circle one): fur feathers scales



The weirdest bit of it is...

It lives in

The most unusual animal is a...

It is the size of a (make a comparison): _____

It think it is unusual because : _____



Attend a giraffe feed and hand-feed the animals!

Feeds happen at 12.15 and 14.15

Please note that times of feeds may change without notice.
Visit the website and ask at entrance for an up to date schedule .

After feeding the giraffes answer the following questions:

1. What did you feed the giraffe?
2. How many giraffes were at the feed?
3. Do you remember her/their names?
4. Describe how the giraffe's tongue felt picking up the food. Use as many descriptive words as possible.
5. What colour is a giraffe's tongue? Why?





Scientific name spotter!

Animals have common names, e.g. lion, which change in different places. Lions are also called: león (Spanish), lev (Czech), llew (Welsh), and leon (Irish). Animals also have a 'scientific name' e.g. *Panthera leo*. Scientific names stay the same no matter what language you speak.



Ring-tailed Lemur

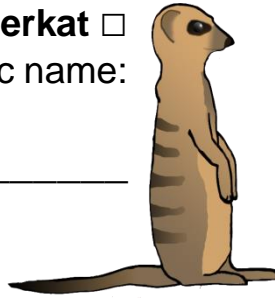
Scientific name:

Meerkat

Scientific name:

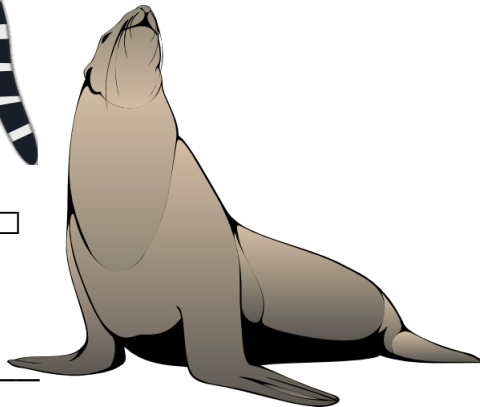
Humboldt Penguin

Scientific name:



Southern Sea Lion

Scientific name:

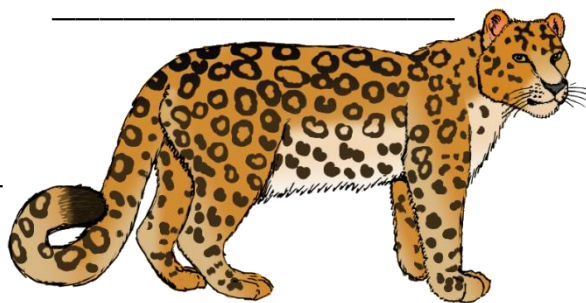


Amur Leopard

Scientific name:

Komodo Dragon

Scientific name:



Ostrich

Scientific name:

Find all of these animals. After you find them, look around for a sign with information about the animal. This will include their scientific name which is always in two parts and *italicised*.

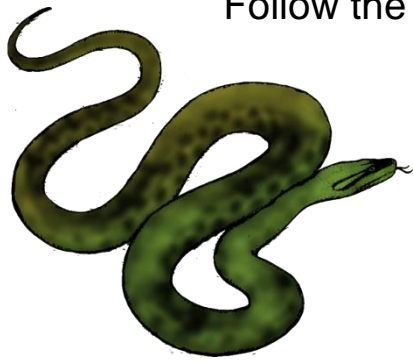
Check off the animals and record their scientific name when you find them.



Complete this and the next page to earn CU hours!

Reptile and Amphibian Spotter

People sometimes miss the scaly and slimy animals. Follow the hints and see if you can find these animals.



Green Anaconda
Find me in Worlds Apart



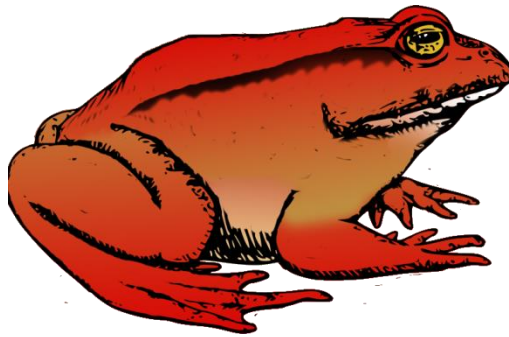
Blue Poison Dart Frog
Inside the Discovery Centre



Burmese Python
We're in Wilds of Asia



Pancake Tortoise
I'm at the back of the Giraffe Building



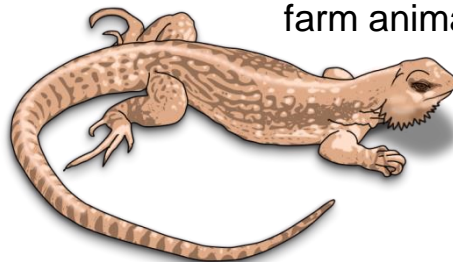
Tomato Frog
We're inside the Giraffe Building



Green Iguana
We live inside Iguana Forest



Aldabra Giant tortoise
Find us at Walking Giants by the farm animals



Bearded Dragon
We're in Sensation Station by the farm animals

After you find these animals, write down if they are a reptile or amphibian and one cool fact about each animal on the next page. Record information like: how big they are, what food they like to eat, or anything else you want to remember.



Reptile and Amphibian factsheet:

worth 1 hour



Record one cool fact for each animal and note if they are a Reptile or an Amphibian



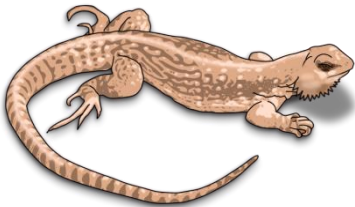
Green Anaconda



Burmese Python



Pancake Tortoise



Bearded Dragon



Green Iguana



Aldabra Giant tortoise



Tomato Frog



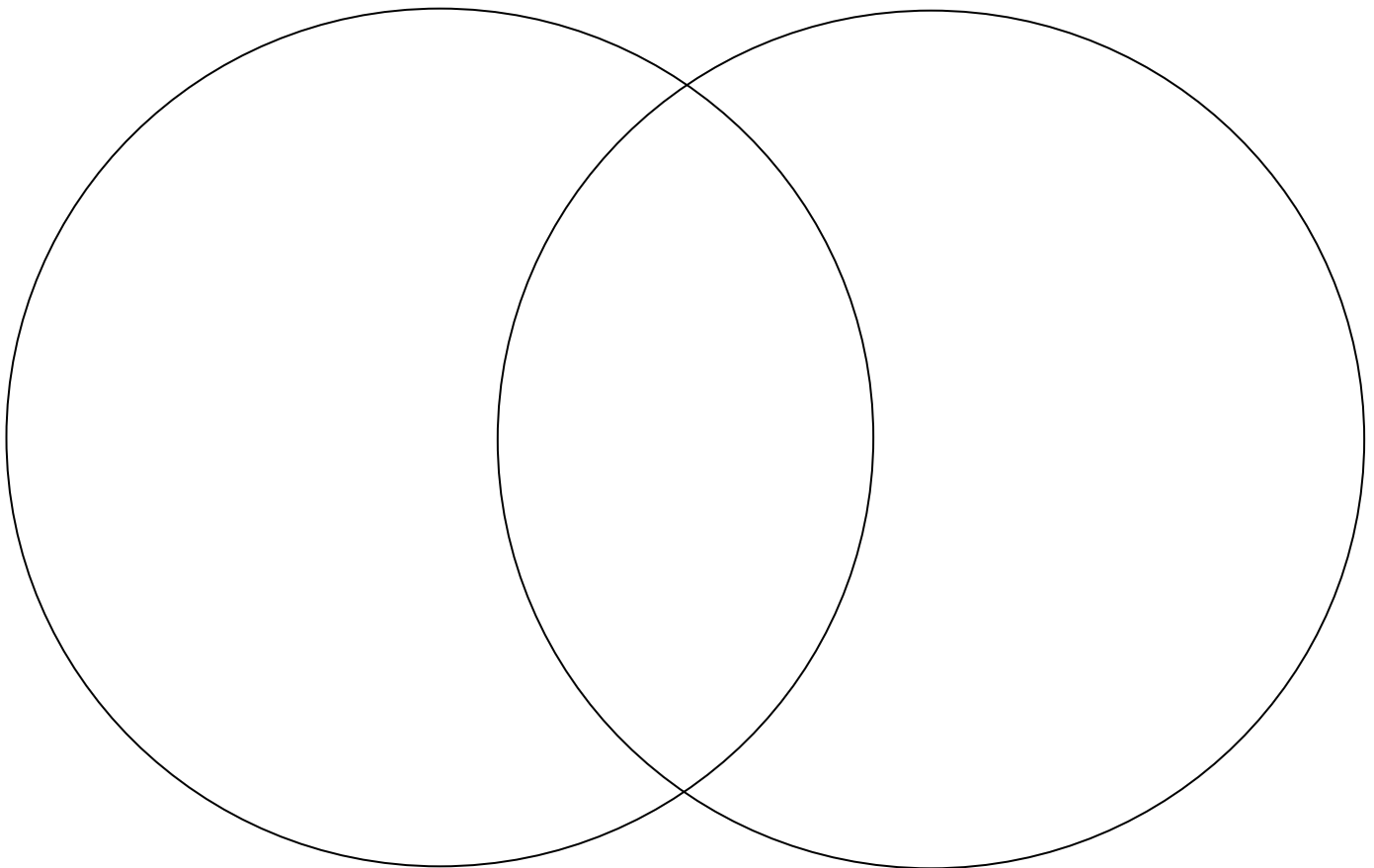
Blue Poison Dart Frog



Choose 6 animals at Colchester Zoo. Read the signs at the animal's enclosure to learn what they eat and record the information in the chart.

Name of Animal	Herbivore (plant eater)	Carnivore (meat eater)	Omnivore (eats both)

Fill in the Venn Diagram to show this information



Which group has the most animals? _____

Which group has the least animals? _____

Visit the Kingdom of the Wild Paddock (the mixed African animal paddock). See how many of these adaptations you can discover.

- .An average Zebra has up to 50 stripes.
_____ zebras were seen in the paddock today.
- How many stripes were in the paddock?
- .Look closely at the ostrich. How many toes do they have? Check the track for a hint. _____ toes.
_____ ostriches were in the paddock today.
- How many ostrich toes were in the paddock?
(remember how many legs they have!)
- Giraffes have very long necks. However, they have just 7 bones in their neck, which the same number of neck bones humans have!
There were _____ giraffes in the paddock today.
How many giraffe neck bones were in the paddock?
- The crowned cranes have very pretty yellow crowns of feathers. There were _____ cranes in the paddock.
If each crown has an average of 24 feathers, how many yellow feather were in the paddock?
- Greater kudu are the large, brown antelopes. They have two very large ears to listen for predators. How many kudu are in the paddock_____. How many ears?
- White rhinos have one big horn and a smaller one. Rhino horns are made out of keratin, the same material in human fingernails.
How many rhinos were in the paddock today?_____
How many big horns?



Total
estimated
stripes

Ostrich
toes

Giraffe
neck
bones

Yellow
Feathers

Kudu ears

Big rhino
horns



Using these details, complete the following page to earn CU hours

Colchester Zoo's Komodo dragon enclosure was built in 2006.

It includes lots of special features including a retractable sun roof (to let in natural light which they need to help them absorb vitamins), rainwater collection tanks and sprinkler systems which let us recreate the wet and dry seasons of their natural habitat. There are numerous other features in the Komodo dragon enclosure including:

For the Komodo's':

- Basking locations (places with sunlight)
- Natural substrate to bury eggs or hide food in
- Plants to provide shade
- Fans to circulate air and maintain heat/humidity
- A greenhouse roof to help trap heat and warm the building
- Water for lying in (to help them shed and stay moist)
- Open ceiling between the sides so the dragons can smell each other

For the Zoo Keepers:

- Connected doorways to mix the two dragons together
- Safety door that lets keepers see where the dragons are before entering
- Behind the scenes area for food preparation
- Behind the scenes area for cleaning supply storage

For Visitors:

- Large windows to view the dragons
- Under cover area for wet weather
- Signs and information about the dragons
- A statue for photo ops!

On the next page, draw a detailed diagram of the Komodo dragon enclosure. Label the above features and anything else you notice.

If you have a hard time seeing some of the features, or are unsure what they mean, attend the Komodo Dragon Encounter (see map, website, or signs at enclosure for the time) to learn more about the animals and their enclosure.



worth 1 1/2 hours

Draw a detailed diagram of the Komodo Dragon Enclosure, making sure to note all the features mentioned on the previous page.

A large, empty rectangular box with a thick black border, intended for the student to draw a detailed diagram of the Komodo Dragon Enclosure.



Talks and Feeding Times

There are a lot of feeds and talks that happen throughout the day.
Check the map (available at Guest Services, Entrance and online) for locations and times.

Watch three Animal Encounters and answer the following questions:

Animal Encounter 1: _____

Are they social animal or a solitary animal?: _____

What food do they eat? _____

What was the keepers name? _____

Animal Encounter 2: _____

Did they animals get fed or given enrichment? Describe what they were fed or the enrichment they got _____

What is one cool fact you learnt about this animal? _____

Animal Encounter: _____

Is the animal a carnivore, herbivore or omnivore? (circle one)

What habitat do they live in? _____

Does the animal have in threats in the wild? _____

If yes, what are they and what can be done to help? _____



Now bring your completed pages of this workbook to the Guest Services building (located next to the red brick building) so we can stamp your Children's University passport.

PLEASE NOTE, while you can complete as many pages as you'd like from any of the workbooks, **YOU CAN ONLY EARN A MAXIMUM OF SIX CU HOURS EACH DAY BY COMPLETING THESE WORKBOOK PAGES**

If you have any comments please contact our education team at education@colchesterzoo.org

Want to earn more CU hours?
Kid's Zoo Academy is a paid two hour experience where you learn all about being a zoo keeper. For details see www.colchesterzoo.org/experiences/kids-zoo-academy